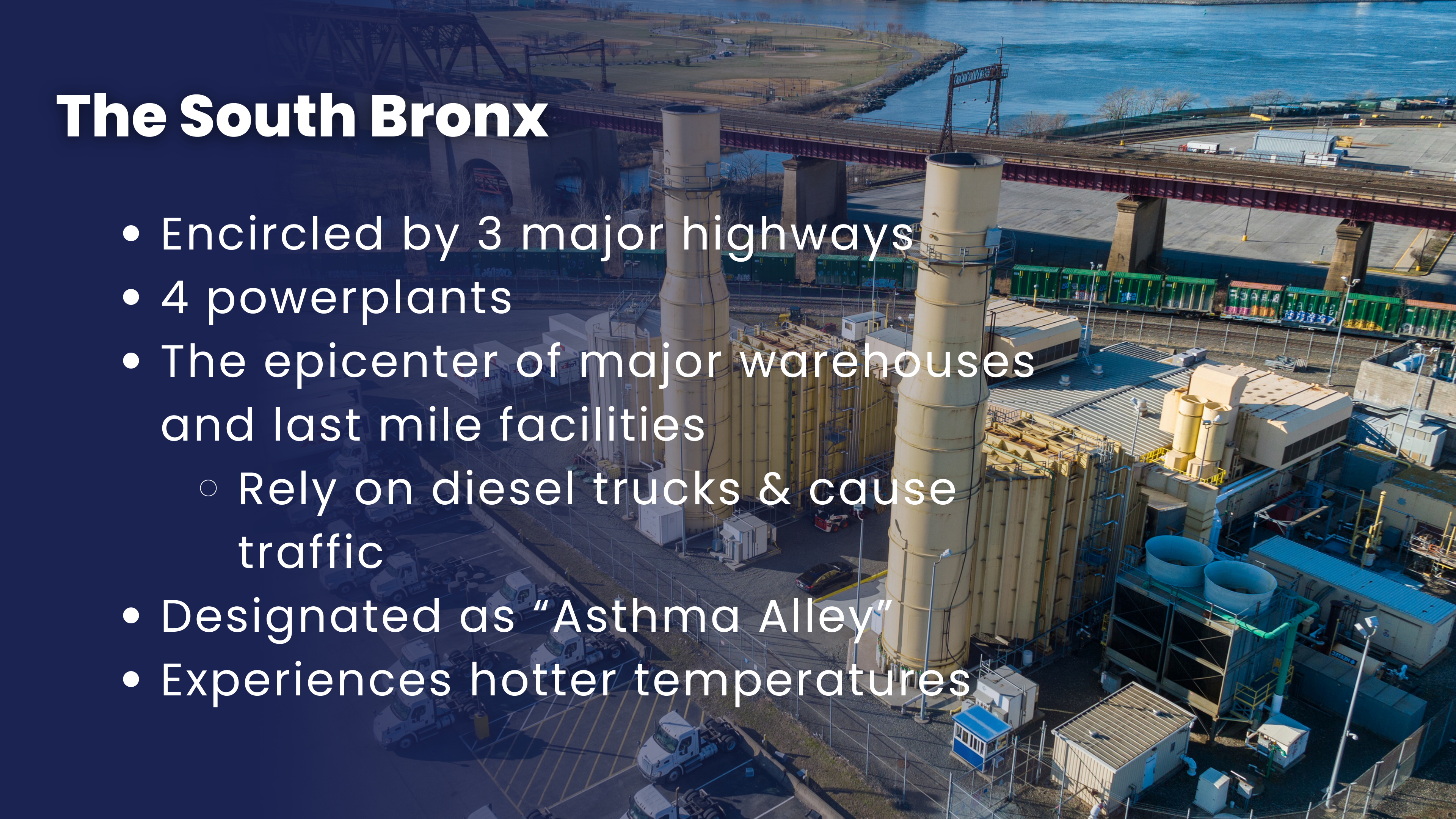


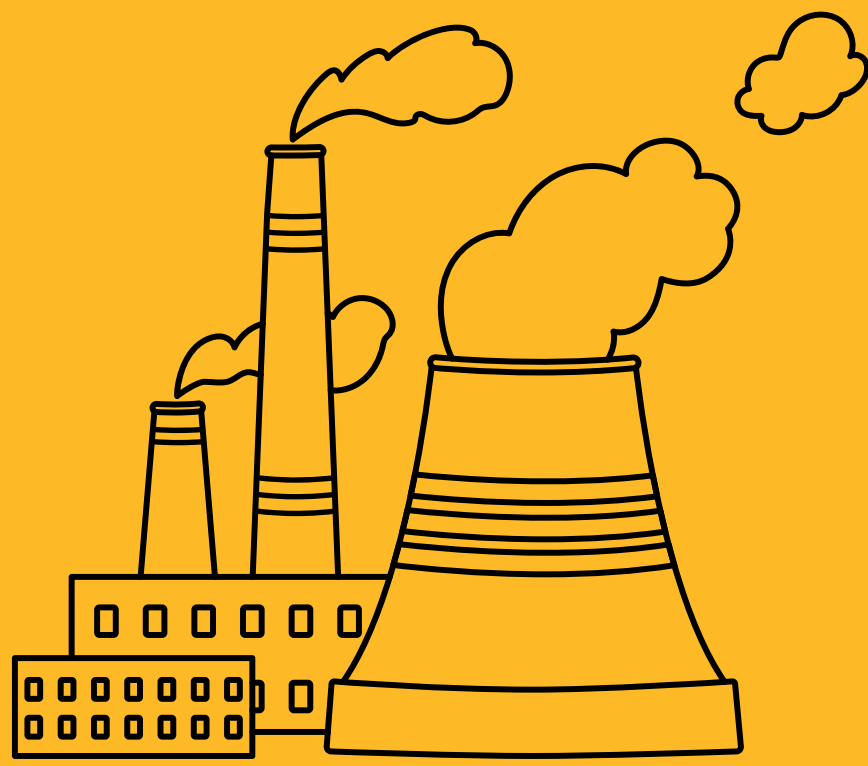
Air Pollution in the South Bronx

The South Bronx

- Encircled by 3 major highways
- 4 powerplants
- The epicenter of major warehouses and last mile facilities
 - Rely on diesel trucks & cause traffic
- Designated as “Asthma Alley”
- Experiences hotter temperatures



Sources of Pollution



**POWER PLANTS &
WAREHOUSES**



**CONSTRUCTION &
OPEN DEBRIS**



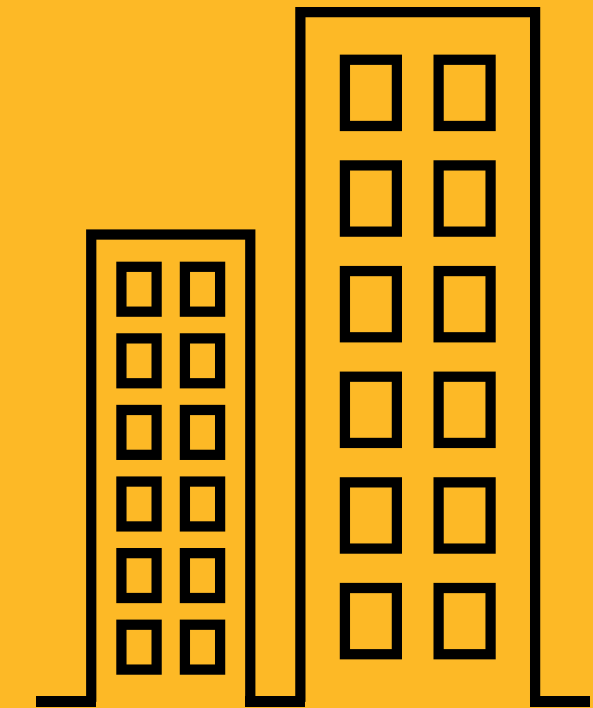
**TRUCKS, BUSES
& CARS**



**LACK OF
GREEN SPACES**



**MAJOR HIGHWAYS &
ROADWAYS**



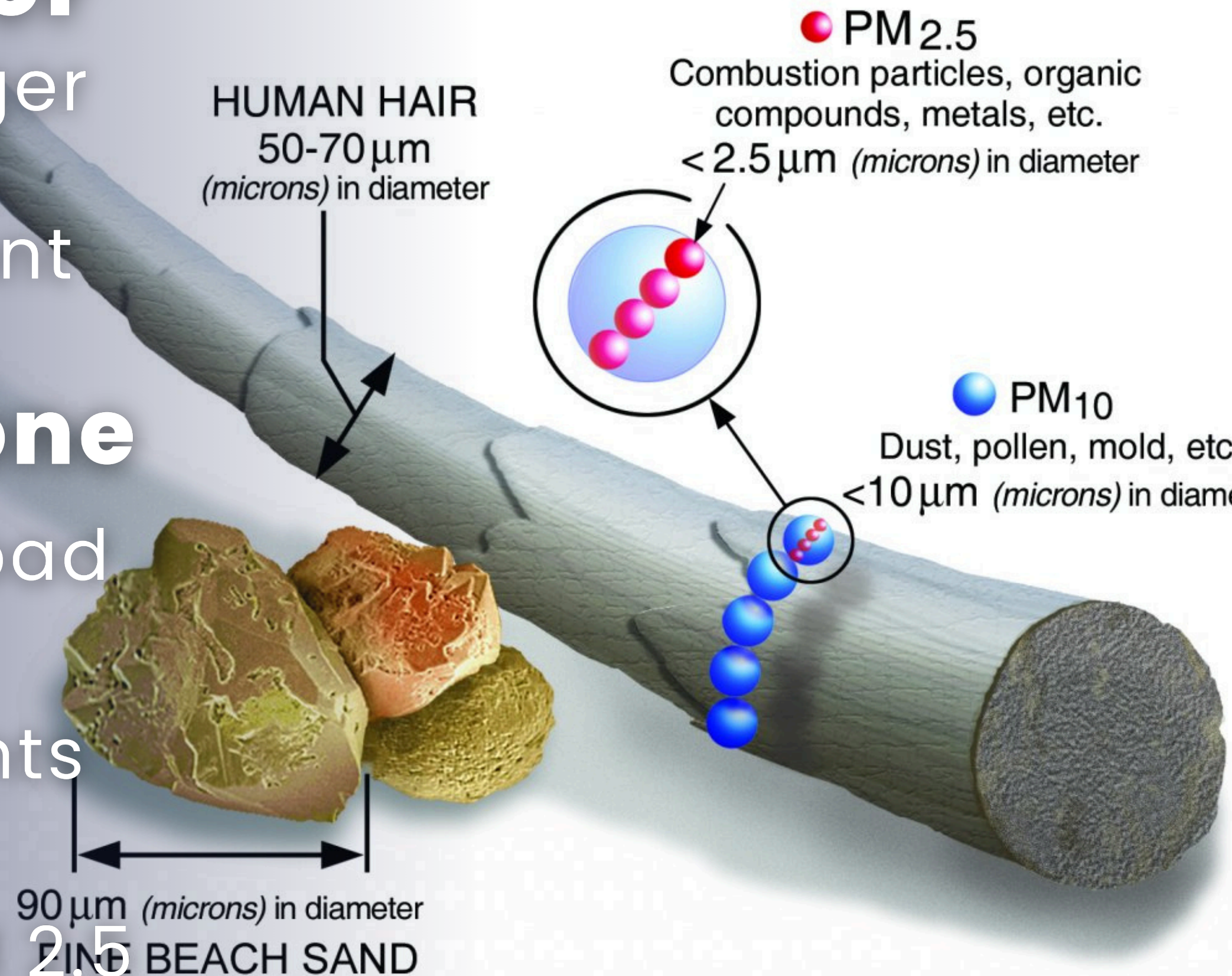
**BUILDING
EMISSIONS**

Particulate Matter

- Tiny particles that linger in the air
- Most common pollutant

Ground-Level Ozone

- Often referred to as "bad ozone"
- Formed when pollutants react with sunlight
- Much smaller than PM 2.5



Health Impacts

- Elevated levels of PM2.5 can lead to **coughing, wheezing, and shortness of breath.**
- Air pollution can lead to a range of **respiratory issues**, exacerbate **heart conditions**, and even increase the risk of **cancer.**
- Poor air quality coupled with extreme heat can increase the risk of heat-related illnesses such as **heat exhaustion and heatstrokes.**

Asthma Alley



Asthma Alley - Short Film

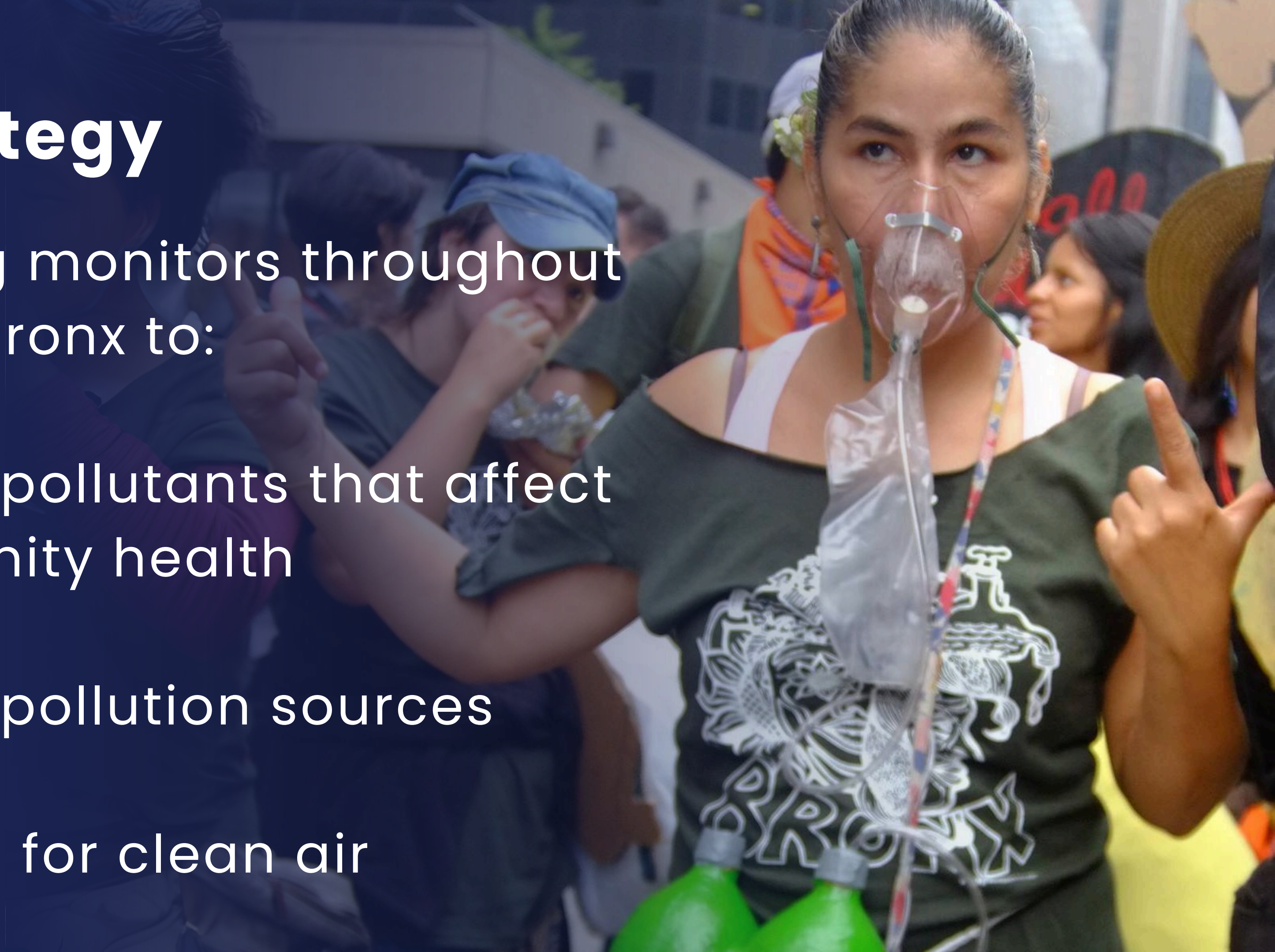
Share



The Strategy

Distributing monitors throughout the South Bronx to:

- Identify pollutants that affect community health
- Identify pollution sources
- Advocate for clean air



Story Map

Air Quality is Being Monitored Here

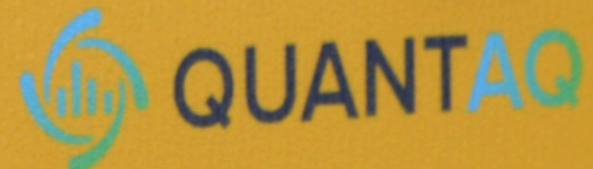
Scan Here




bit.ly/cleanairforthepeople

Decades of public policies have allowed the siting of pollution-emitting facilities and infrastructure throughout the Bronx, causing disproportionate health burdens and challenges because of poor air quality. In response, **South Bronx Unite** has strategically deployed high-grade air quality monitors to: identify pollutants that affect community health; identify pollution sources; and advocate for clean air. Scan the QR code to learn more.

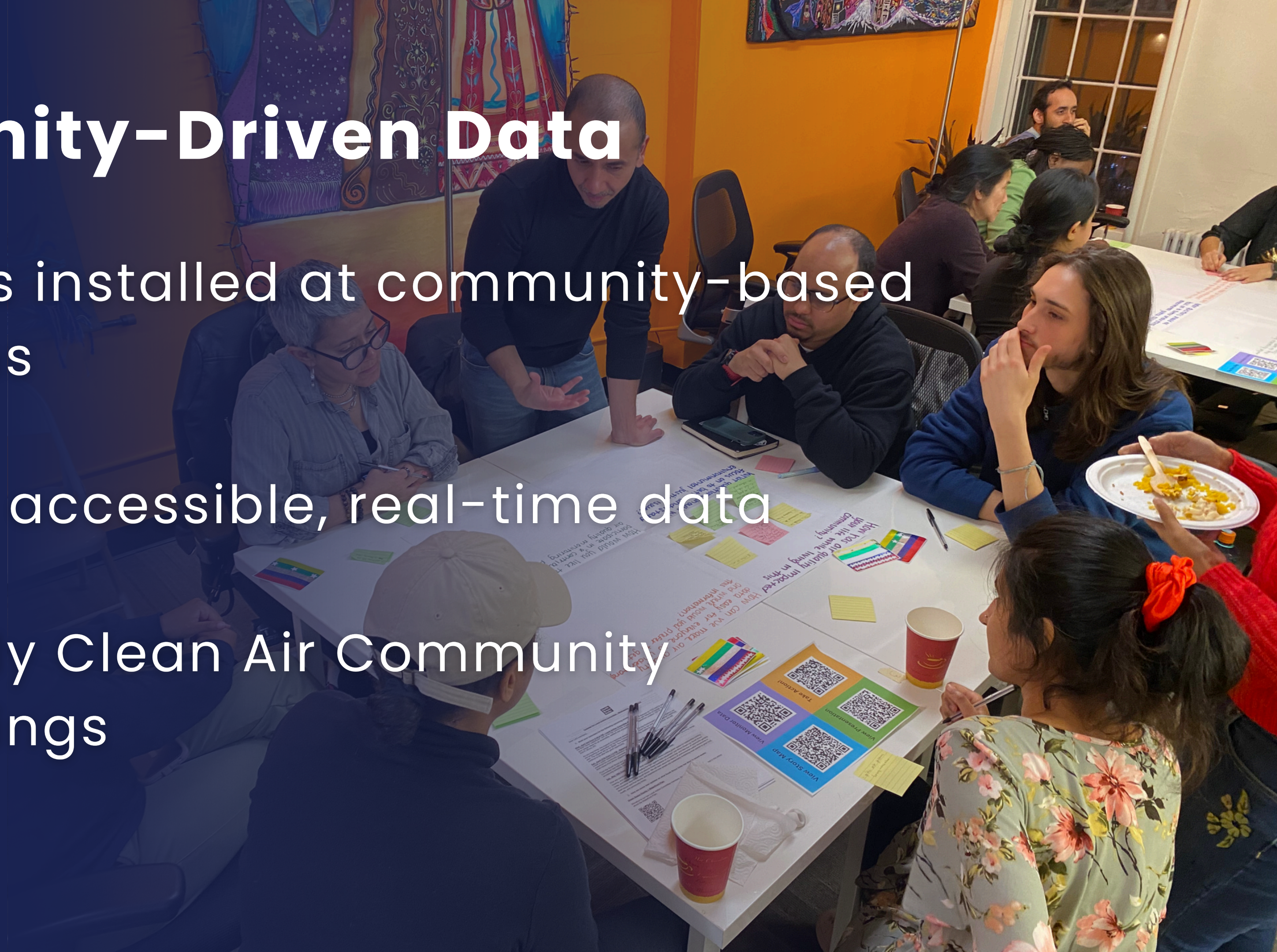
South Bronx Unite



 COLUMBIA | MAILMAN SCHOOL OF PUBLIC HEALTH
THE CENTER FOR ENVIRONMENTAL
HEALTH AND JUSTICE
IN NORTHERN MANHATTAN

Community-Driven Data

- Monitors installed at community-based locations
- Publicly accessible, real-time data
- Quarterly Clean Air Community Convenings



Take Action NOW!

